

Houay Ho Dam Hydropower Info - by Hobo Maps -

[Home](#)

[Go Back to Hydropower Web Page](#)

Houay Ho Dam images below:



Houay Ho Powerhouse images below:



Houay Ho dam is located in Samakkhixay District, Attapeu Province, Lao PDR about 160 km east of Pakse and 30 km northwest of Attapeu.

The project is a 'build-operate-transfer' hydropower project with installed capacity of 152 megawatts.

The Project was initiated by Daewoo Engineering and Construction from Korea and Loxley PLC in an agreement with Laos in 1993 for a concession period of 30 years commencing from 1999 when commercial operations began.

In January 2002, Tractebel Electricity and Gas International, a Belgian firm, and a Thai firm, MCL, purchased 80% of Daewoo's and Loxley PLC's shares. Tractebel then became a subsidiary of GDF Suez. Other ownership changes occurred.

According to their website (<https://www.houayho.com/en>) in 2021 the project owner is Houay Ho Power Co., with shareholders - Ltd Glow Company Limited owning 55 percent, WHA Energy 2 Co., Ltd. holding 25 percent and EDL holding 20 percent.

98% of the energy generated is planned to be supplied to EGAT in Thailand in accordance with a Take-or-Pay commitment for a period of 30 years. The remaining 2% goes to the EDL grid for distribution to adjacent local areas in Laos.

In June 1997 a Power Purchase Agreement (PPA) with Electricity Generating Authority of Thailand (EGAT) was signed. Under the PPA, HHPC is to supply 126 MW per day or 394.2 GWh per year to Thailand.

The Project includes water transfer between the Houay Ho River and a small tributary of the Xe Kong River to take advantage of the altitude difference (head) between the two. The Project creates a reservoir with a surface area of 37 square km.

The powerhouse has two Francis type turbines of 75 MW each and a single Pelton turbine of 2.1 MW for total capacity of 152 MW.

Houay Ho Hydropower project location in image below:

<https://www.hobomaps.com/HouayHoDamInfo.html>



Technical information of the Houay Ho Hydropower Project below:

- 1. Reservoir area : 37 km²
- Maximum flood level : 883 masl
- Minimum flood level : 861 masl
- Effective volume : Maximum 527 x 10⁶ m³
- flowing volume : 22 m³/s
- Yearly averaged rainfall : 2,300 mm
- Catchment area : 192 km²

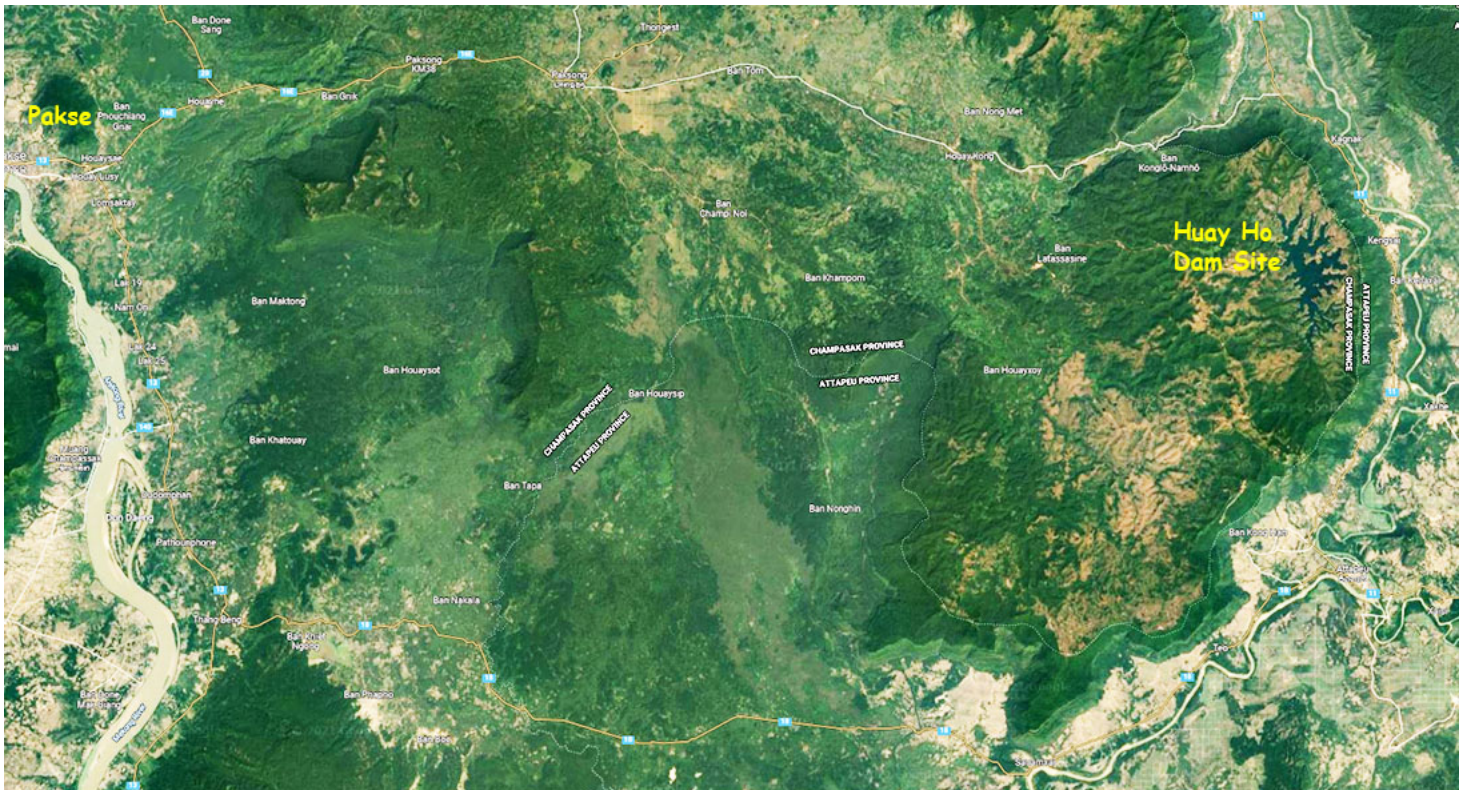
- 2. Dam
- Type : mixed concrete
- Height : 79 m
- Volume : 1.11 x 10⁶ m³

- 3. Powerhouse and Transmission Line
- Installed capacity : 150 MW (75 MW x 2) and a small turbine unit of 2.1 MW for domestic supply
- Turbine brands : Francis and Pelton
- Waterway : 3,540 m (pressured underground tunnel)
- Transmission line : 230 kV x 2 (length of more than 161 km to the Thai-Lao border)

Houay Ho Dam Site image below located at coordinates 15°03'32.0"N 106°45'52.2"E (15.058900, 106.764500):



Houay Ho Dam Location shown in satellite image below:



Houay Ho hydropower project is located in center of Southern Laos map below:

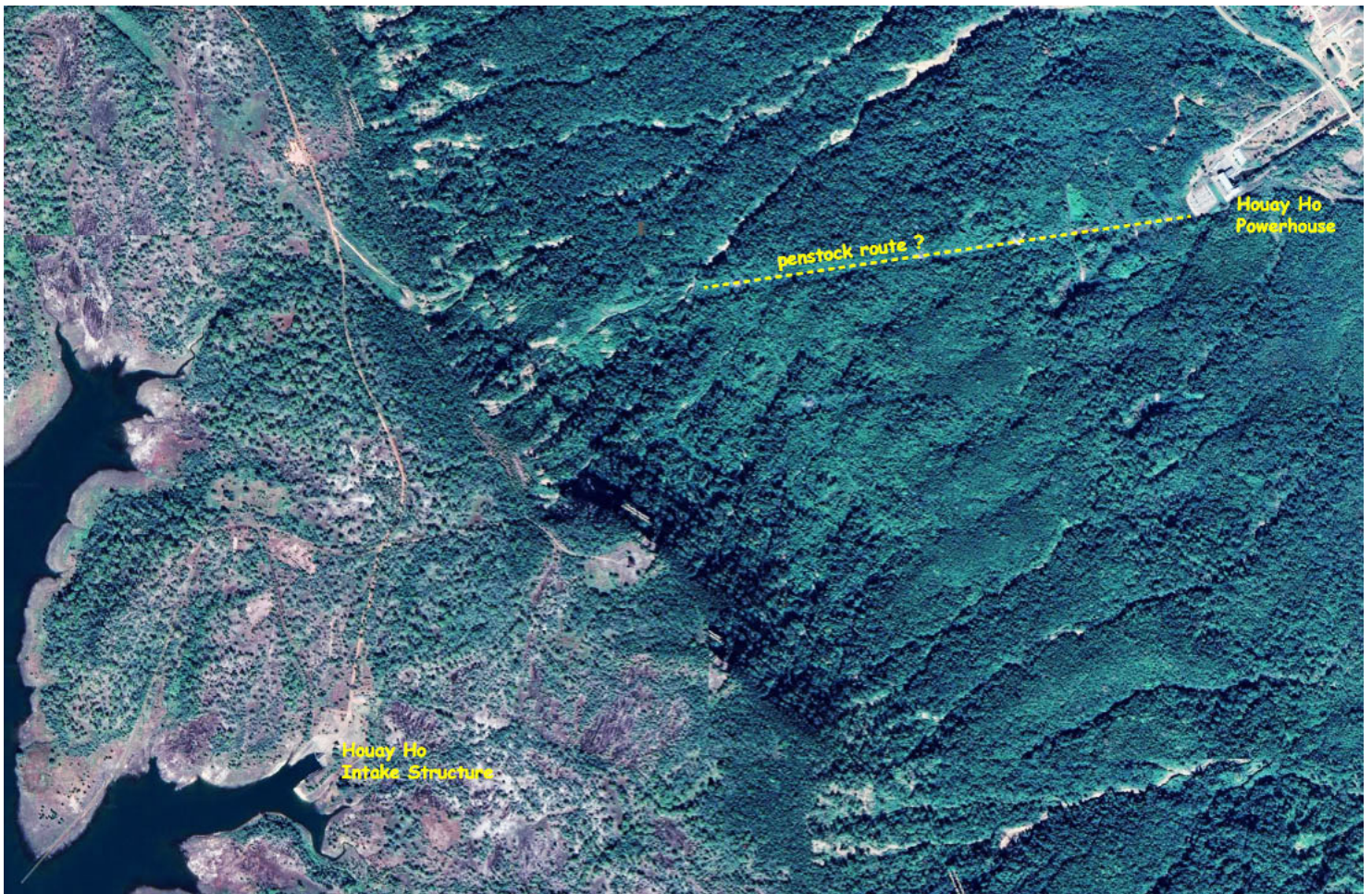


HOUAY HO HYDROPOWER PLANT

Name of Project	Houay Ho power company (HHPC)
Shareholders	EDL-GEN : 20% Glow Co; Ltd : 67.25% Hemaray Land & Development : 12.75%
Location	River: Houay Ho, Province: ATTAPUE
Operation date	03/09/1999
Investment Mode	Independent Power Producer
Contractor	Main: Daewoo
Operator	Houay Ho Power Co; Ltd
Market	Laos: 1% Thailand: 99%
Install Capacity	150 MW + 2.1 MW
Average Annual Energy	450 GWh/year
Plant Factor	50%
Turbines	• 2 x 75 MW Francis and 1 x 2.1 MW Pelton
Project Type	Riservoir
Catchment Area	192 km ²
Reservoir Area	37 km ²
Resettlement	Ban Houay Kong

Houay Ho Project layout images below:





Houay Ho Powerhouse in images below located at coordinates 15°04'39.7"N 106°49'46.2"E (15.077700, 106.829500):





Houay Ho Intake structure in image below:

